

A Weekend Trip of **Art** Immersion

# UBE ART TRIP

Western Edge of Honshu  
A Sparkling Sight of Sky,  
Sea, & Vibrant Green  
Yamaguchi & Ube



P06-07

**The 30th UBE Biennale**  
Sunday, Oct. 27 - Sunday, Dec. 22



P.08-11

My First UBE Biennale!

Visiting Ube? Start with Tokiwa Park

P.12-15

Packed full of history and culture

Downtown Art Tour



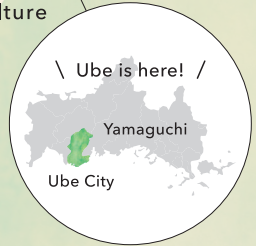
A city sculpting the future Ube, Yamaguchi

# A Weekend Trip of Art Immersion

Ube City, located in southwest Yamaguchi Prefecture.

Ube's biggest attraction would have to be the many sculptures scattered throughout city. The city continues to share its unique culture as an art-infused town, including hosting the "UBE Biennale," the world's largest outdoor sculpture competition.

Tourists can also enjoy their trip to the fullest with Ube's many scenic views and delicious local food provided by the bounty of the sea and mountains.



## From Coal Mines to Art

Ube was already mining coal in the early Edo Period and after the Meiji period the city had been built off the coal industry. While the city developed as an industrial city after the war, it also struggled with severe environmental issues, such as air pollution. This spurred residents to create movements such as "Greenery Campaigns" and "Flower-Filled Campaigns" to change their city into a more comfortable place to live. These movements were the starting point of "UBE Biennale" and other urban development projects that incorporate art.



1923, Coal Mines and Company Housing  
\*Source: "Ube City Municipal Photo Album"



[Top] Fountain installation featuring a reproduction of Falconet's "Bather" in front of Ube Station (Now Ube-Shinkawa St.) [Bottom] The 1st Ube City Outdoor Sculpture Exhibit in 1961

Popular on social media, Kiwa La Beach.



Otana Tunnel, beautiful in spring with cherry blossoms, too.

## Also Home to Lush Nature Starring The Sparkling Sky, Sea, & Vibrant Green

Ube is surrounded by rich nature from the southern coastal areas to the northern mountains and hills. Its natural scenery is one of the main attractions of the area, including the trending “Kiwa La Beach” and “Otana Tunnel”.



Cafés, Sweets, Trending Eats and More!

## The longest-running International Outdoor Sculpture Competition UBE Biennale

This international outdoor sculpture competition, which has been held every two years since 1961, was inspired by the resident’s movements to beautify and spiritually enrich their town after the war. As one of the best collections in Japan, with more than 200 outdoor sculptures installed, visitors can encounter a wide variety of art in the city center, parks, and more. This year (2024), the exhibit will be held from Sunday, Oct. 27- Sunday, Dec. 22.



Rocking Doll (1979)  
SEKI Masashi



New works will be unveiled at UBE Biennale Sculpture Hill in Tokiwa Park.  
Ant Castle (1962) MUKAI Ryokichi

## Everyone knows that delicious local food is an indispensable part of any trip!

From bread to coffee perfect for eating on the go, to Ube’s “B-class gourmet” ramen, you won’t want to miss the city’s unique take on food while you’re there.



Ube Ramen, discover the flavor and richness of tonkotsu, or pork-bone broth, ramen

Sounds like  
there's lots to  
enjoy 🎵





# UBE Biennale and The History of Ube City

This exhibition has been held for more than half a century,  
and was a pioneer of "urban development through art".

How was a town decorated with sculptures all over first created?

I never knew  
about  
all this!



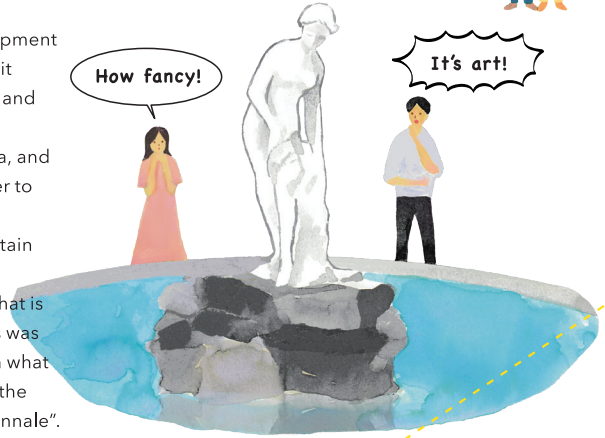
Replica Art Installed  
in Front of the Station

1958

Although Ube saw rapid development during postwar reconstruction, it came at the cost of air pollution and other environmental problems. Industry, government, academia, and the private sector came together to restore the city's prosperity and ease-of-living, leading to a fountain installation of a reproduction of Falconet's "Bather" in front of what is now Ube-Shinkawa Station. This was the public's first interaction with what would later be known as one of the many sculptures in the "UBE Biennale".

How fancy!

It's art!



1958

1961

1969

The First  
Sculpture  
Exhibit  
in Ube City  
1961

In this year, the first outdoor sculpture exhibit in Japan was held. The "UBE Biennale Sculpture Hill," the same venue used today, was developed at this time. According to records, it was very popular, attracting 300-400 visitors a day, including those from outside the prefecture. Reports say you could see children sketching, young people taking commemorative photos, and residents enjoying the sculptures all over.

I've never  
seen  
sculptures  
before!

Wow, it's  
incredible!





UBE ART TRIP

From this year, all submitted models were put on exhibit for the public. 9 of the contest winners were commissioned to create the actual sculptures, which were then displayed together with 10 works from the Invited Artists Division at the 15th exhibition (1993).

**1992**  
First Public Viewings of Submitted Models

**1969**

A Gateway to Success for Artists



I'll win the contest and join the ranks of top artists!

The 3rd exhibit, which was renamed the "International Sculpture Competition," used a diverse variety of materials for the works, such as stainless steel, aluminum, and plastic. The Grand Prize (Ube City Prize) went to Saburo Muraoka's "Weight", which was made of fiber-reinforced plastic. The local newspaper at the time called it the "Akutagawa Prize of the sculpture world" because many of the winners went on to become first-class artists.



**1992**

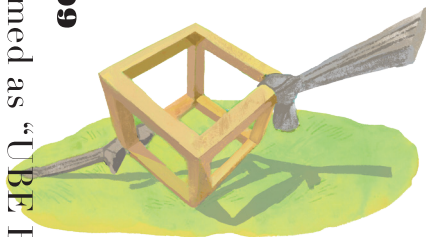
**2009**

**2024**

**1979**

**2009**

Renamed as "UBE Biennale" (International Sculpture Competition)



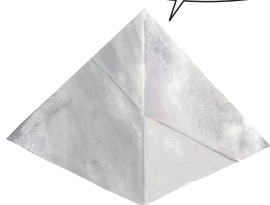
Well known for many years as "International Sculpture Competition", this year marks the official name change to "UBE Biennale". Passed down as an asset of the city from generation to generation through its residents, this exhibit continues to promote "community development through art" to this day.

**1979**

The First Grand Prize Awarded to a Publicly Solicited Work

The theme this year was "Poetry in Sculpture". Not only the shape, but the psychological and spiritual background of the work was taken into consideration. 14 works from invited artists, 11 works chosen from 266 applicants, and 32 outstanding entries were put on display. The prestigious grand prize went to Isao Tanaka's "Pentagonal Pyramid". This was the first time the Grand Prize was awarded to a public entry, rather than an artist who had been invited to participate.

The 8th Contemporary Japanese Sculpture Grand Prize (Ube City Prize), "Pentagonal Pyramid"



# 30th UBE Biennale

(International Sculpture Competition)

2024.

Sunday, **Oct.27** - Sunday, **Dec.22**

This year marks the 30th UBE Biennale.

Here are just a few of the highlights first-time visitors can enjoy!



## Walk Through Nature & Immerse Yourself in Sculptures

The event will be held at the "UBE Biennial Sculpture Hill" in Tokiwa Park, which boasts an area of approximately 190 hectares.

Beginning with the symbolic "Ant Castle", you can view 15 new works of art using various materials such as stone, stainless steel, and concrete on display. You can even go inside and touch some of the works, a unique aspect of sculptures that allows us to enjoy the art using all five senses. Visitors can also enjoy how the time of day or weather affects the mood of exhibitions by going in the morning or night, sun or rain to see them in different lights.





So many things  
you can try out♪



## Jam-Packed with Events!



During the exhibition, models of the selected works will be on display, as well as workshops where visitors can try out art-related activities and buy the event merchandise.



Coloring for  
kids, too ♪



## You can see the sculptures brought in before the exhibition starts?!



Visitors who stop by before the exhibition starts may get the chance to see the sculptures carried in by heavy machinery.

A great to enjoy the “behind the scenes” and a popular unofficial event among well-informed fans!



See large heavy machinery in use!



## 30th UBE Biennale

(International Sculpture Competition)

2024.

Sunday, **Oct.27**-Sunday, **Dec.22**

Tokiwa Park

UBE Biennale Sculpture Hill

- Organized by Ube City, Ube Biennale Committee, Mainichi Newspapers
  - Sponsored by UBE Corporation
  - Supported by the Agency for Cultural Affairs, Project for the Creation of Cultural & Art Hub 2024 (Ube City Tourism, Sports & Culture Department, Cultural Promotion Division, UBE Biennale Committee)
- TEL. 0836-34-8562 (9AM-5PM/Closed Weekends & Holidays)  
Email: [museum@city.ube.yamaguchi.jp](mailto:museum@city.ube.yamaguchi.jp)





My First UBE Biennale

# Visiting Ube?

# Start with Tokiwa Park!

Rich in nature, Tokiwa Park is home to a number of sculptures in harmony with its green backdrop and beautiful flowers. This vast park is also home to many other attractions, such as a zoo, botanical garden, and the Coal Museum where visitors can learn about the history of the coal industry.

## Access

Closest Station: 15-minute walk from JR Tokiwa Station.

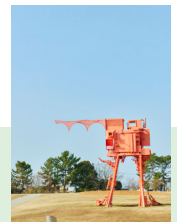
See more detailed access information and a park map on **our website below!**

<https://www.tokiwapark.jp/>



## Around 100 Pieces of Sculpture Art to Be Displayed Will Include Past Grand Prize Winners and New Works

Tokiwa Park is well known to many residents as an oasis in the city. For over half a century, its history has been engraved with sculptures and used as the UBE Biennale venue. Around 100 of the city's 200 sculptures can be seen here. Visitors can even have the pleasure of seeing and feeling art with their own eyes and hands!



## Check Out Past Grand Prize Winners!

A number of past Grand Prize winners are on display in Ube City. If you don't know where to start, check out Tokiwa Park first! You can see sculptures ranging from different themes, materials, and even sizes. Make sure to check them out from different angles, too!



You won't want to miss how different outdoor sculptures can look depending on the weather and time of day, too!

Find more information here

For details on the sculptures' locations and to see more not listed in this guidebook,

**Check out the "Sculpture Map"!**  
<https://ubebiennale.com/stroll/>



Weight (1969)  
MURAOKA Saburo



remember - ube (2017)  
KIM Kyoung-Min



Under Current (1991)  
TSUCHIYA Kimio



The Birth of Life (2019)  
MIYAKE Shiko



Silhouette of Time (2003)  
SHINGU Susumu



distance (2022)  
NISHIZAWA Toshitaka

### Can't Miss Spots

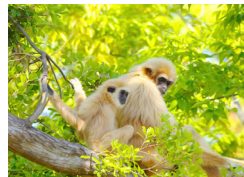


#### Coal Mining History Museum

Opened in 1969, this was Japan's first Coal Museum. See replications from the 1955 - 1964 of the excavation site and

miners' housing, as well as exhibitions of excavation tools, various machinery, and more! Includes an impressive outdoor exhibition of large machinery and steam locomotives that were used in the coal mines. And don't miss the beautiful view starring the city landscape and the Seto Inland Sea from the observatory made from mining scaffolding!

●9:30AM-5PM ●Closed: Tuesdays, Subject to change depending on events ●Admission Fee: Free



#### Tokiwa Zoo

Visitors to Tokiwa Zoo can enjoy the enchanting view of animals living their real lives in the "Habitat

Exhibitions." Get up-close and personal with animals from around the world, including Asian, Central and South American, African animals, and even a gibbon exhibit area which is divided by a water moat without cages or fences.  
●9:30AM-5PM (Last Admission 4:30PM) ●Closed: Tuesdays, Subject to change depending on events ●Admission Fee: Adults: ¥500, 70+: ¥250, Junior High Students and Below: ¥200



There's still plenty  
more to see!

### Past Grand Prize Winners

UBE Biennale has been called the "Gateway to Success for New Sculptors" since it was first founded. It is well known not only in Japan, but around the world. There have been many entries from other countries, some of these winning the Grand Prize. So, come on by and enjoy world-class art to your heart's content.



Monument (1981)  
MASUDA Masakazu



Gravity Space - Red (1997)  
UCHIDA Haruyuki



SUN SADDLE '87 (1987)  
YAMAGUCHI Makio



PERMUTATION (2007)  
Piotr TWARDOWSKI



Mountain Scape 73-2 (1973)  
YAMAMOTO Eishi



Let's Sail to the Moon (1995)  
IDA Katsumi



Self-consciousness (2009)  
YOM SangUk

Selected as one of the "100 best cherry blossom viewing spots," this is one of the best in the prefecture.



### Can't Miss Spots

#### The Global Greenhouse



Based on the concept of "a botanical garden that allows visitors to travel the world and be inspired." There are 8 zones designed with plants from a specific native region, each home to a symbolic tree. With a wide variety of other plants also on display, visitors can enjoy rare sights as if they were truly traveling the world.

● 9:30AM-5PM (Last Entry 4:30PM) ● Closed: Tuesday, End of the Year Holidays (12/29-1/1) \*If Tues. falls on a holiday, closed the following day. Subject to change depending on events  
● Admission Fee: Adults(Age 18-69): ¥300, 70+: ¥200, High School and Under (Up to 18): Free





Thinking Space・9・69 "Vacancy...  
I saw that..." (1969)  
SAKAE Toshiaki



Docking No.26 (1975)  
TANAKA Yonekichi



Standing Man-UBE (2007)  
HAYASHI Takeshi



Seats in Intimate Juxtaposition (1976)  
MASUDA Masakazu



Our Love (2013)  
TOMINAGA Atsuya

## See, Feel, Be Astounded! Enjoy the exhibit all five senses

Some are unique and striking from the outside, while others can be admired from the inside. Another unique feature of 3-D sculptures is how they allow us to admire them in a playful manner. See and feel the art in the way YOU want!



About 50,000 Nanohana blossoms are planted along the 1,500 m2 of the lakeside parkway. Every year in January, a carpet of yellow spreads over the area, announcing the early arrival of spring.



A Spider's Thread (1997)  
YABUCHI Satoshi



The law of the forest (2017)  
ITO Yoshihide

## Can't Miss Spots

### Hawaiian Resort Café Leola

☎0836(51)7120

A Hawaiian cafe at "Tokiwa Kosui Hall" that resembles a relaxing resort space overlooking Lake Tokiwa. Their menu lineup included dishes that are pleasing to both the eyes and the palate, such as the hearty Loco Moco and pancakes. The spacious seating is perfect for relaxing after a long day of walking around. Pets are also welcome. If visiting by car, the east parking lot is the closest parking area.

●Ube City, Okiube 254, Tokiwa Kosui Hall B1  
●Morning: 8AM-11AM, Lunch/Cafe:11AM-6PM  
(Last Order 5:30PM) ●Closed: Wednesdays

Sounds like  
a fun-filled day!♪



Hawaiian Pancakes  
with Hazelnuts





Sculptures greet you immediately after leaving the station.  
Canted Shape (1981)  
SUMIKAWA Kiichi



## Near JR Ube-Shinkawa Station, Symbol Road

As you exit the station building of Ube-Shinkawa Station, the gateway to the city, you are immediately greeted by a tall sculpture. This station appears in

"Evangelion 3.0+1.0 Thrice Upon a Time" movie and is a famous location among the movie's fans. After passing the roundabout, you will see "Symbol Road" leading to the city center.



Statue of  
Watanabe Sukesaku (1936)  
ASAKURA Fumio



Rond (1995)  
KUROKAWA Akihiko



Message from Ube  
FUTAKUCHI Kinichi



SEED proliferation (1999)  
ITO Kentaro

Designated as an "Important Cultural Property" in 2005.



## Watanabe Memorial Hall

An art & culture center to enjoy both sculpture & architecture

This historic building was built in the 1930s to commemorate the achievements of Yusaku Watanabe, who laid the foundation for the development of Ube City. The Memorial Hall, which forms the core of the building, was designed by architectural master Togo Murano, and is widely known both in Japan and abroad as his masterpiece. Today, the hall serves as a center for artistic and cultural activities, hosting music and theater performances.

● Ube City, Asahimachi 8-1 ● 9AM-5PM ● Closed: Every 3rd Tues

## In a Town Overflowing with History & Culture Art Stroll



2

## BENCH

☎0836-39-8378

A harmony of carefully selected dough and local ingredients

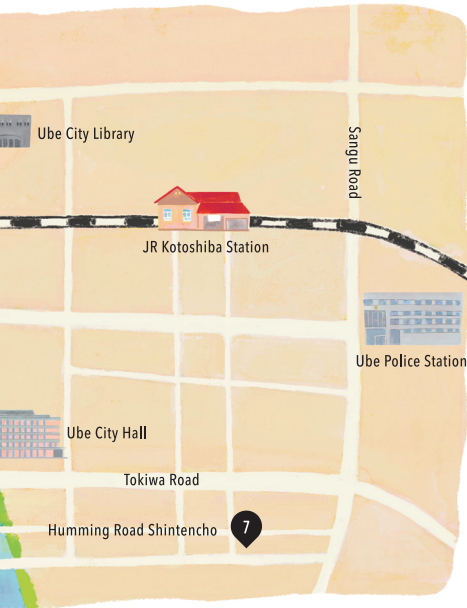
A popular local store along Symbol Road. A must-see with its wide variety, including 15 kinds of plain bread and 30 types of filled and stuffed bread. The key to the delicious taste is the slow fermentation of the dough, which is baked without eggs or dairy products. Many items sell out in the afternoon, so get there early!

● Ube City, Chuchoo 1-4-15 ● 10AM-3PM ● Closed: Sun-Wed

Side dish ingredients come from the local vegetables.



From Ube-Shinkawa St. – Kotoshiba St.  
You can find a townscape adorned  
with sculptures and artwork.  
Enjoy walking around the town  
while checking out popular  
local food and tourist spots.



Work 65-3 (1965)  
TSUCHITANI Takeshi



The City (1981)  
ISHIGURO Shoji



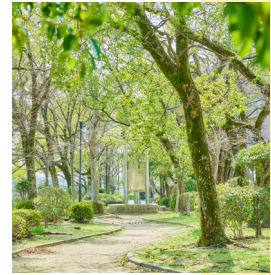
A balance of the sky (2002)  
SEKINE Nobuo



the appearance of the world (2005)  
KAMIYAMA Akira

## Near Majime River

Lush green parks line both banks of the Majime River, which runs north-south through the center of the city. In particular, the area around city hall is dotted with many sculptures, making it the ideal spot for strolling and art appreciation. A perfect spot to see the seasonal flowers and trees of the “city of greenery, flowers, and sculptures”.



Various sculptures are also scattered along the lush green walkway.

## YCCU

(Youth Creative Container Ube)

☎0836-38-8825



**A community & event space where multiple generations interact**

Located near Ube Chuo Gintengai, this community space welcomes all ages. There is also a café next door, which can be used as a rest area. For those who want to tour all around the city, rental bicycles (up to 3) are also available.

●Ube City, Chuocho 3-8-20 ●10AM-6PM ●Closed: Holidays, Obon Holidays, End of the Year Holidays

## Sanpei Ramen

☎0836-21-8212



**Ube ramen – a famous local specialty!**

Characterized by its super-rich pork bone flavor, this Ube ramen store boasts a special broth made from a combination of pork bones and soy sauce slowly simmered for several hours. Rich in flavor with a surprisingly light aftertaste. Goes perfect with the chewy, medium-thick noodles made by a local noodle factory.

●Ube City, Matsushimacho 17-6 ●11AM-4PM ●Closed: Sundays, Vernal & Autumnal Equinox

5

## Zakka Harutoyuki

☎090-6416-4158

**Find one-of-a-kind goods in a space that brings you back to the past**

While it may look like an old-fashioned tobacco store on a street corner...but it's not! It's actually a general store! Filled with one-of-a-kind accessories, interior decorations, and tableware. Constantly changing, the space is filled with unique items that you can only find “here and now”!

●Ube City, Chuocho 2-12-8 ●Weekdays, Every 2nd & 4th Sun./11AM-3PM, Saturdays/1PM-5PM ●Closed: Mon, Tues, Fri, Every 1st, 3rd, 5th Sunday (Schedule may vary)

Check Instagram in advance for open schedule and hours.





## Near Ube City Library, Yamaguchi University Faculty of Medicine and Health Sciences

Numerous sculptures are also displayed in facilities that are indispensable to the daily lives of citizens. At the library, sculptures are also located inside the building, providing a different experience from seeing them outdoors. There are also many sculptures near the Yamaguchi University Faculty of Medicine and Health Sciences, which has an affiliated hospital, as well as along Majime River on the east side of the university.



Walkway.  
Going through the Air 2005 (2005)  
NISHINO Kozo



Astro-phenomena (1975)  
TADA Minami



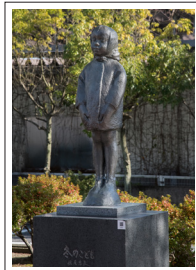
La stanza di Melissa (2005)  
NAGASAWA Hidetoshi



Big Head III (2005)  
YOSHINO Tatsumi



Cycle-90° Presentiment of Wind III (2005)  
MATSUMOTO Kaoru



Child in Winter (1965)  
SATO Churyo



6

### Gelateria Kurakichi

☎070(2795) 1755

#### Fresh milk from the pastures deliver a gentle taste

Gelato here is made with milk from Fujii Ranch, which the owner runs in Shunan City. The most popular item is the "Asashibori Miruku", made from milk that is delivered every morning right after milking, which has a rich flavor and gently melts in the mouth. Try up to 12 flavors, such as pistachio, green tea, and milk-free fruit sorbets! Eat in or enjoy it while touring the sculptures.

●Ube City, Minami Kogushi 1-2-3 ●12PM-6PM ● Closed:  
Monday & Tuesday



Pick and choose  
your flavors for  
a single, double,  
or triple scoop.

### Piccoro Coffee

7

Enjoy some "me" time while feeling  
as if you're in the Mediterranean

The owner loves to travel and has recreated a coffee stand that he became familiar with during his stay in Europe in his hometown of Ube City. Upon entering the store, you are greeted by a blue space reminiscent of the Mediterranean Sea. You can enjoy authentic coffee for a great price, and if you are lucky, you may even find some homemade bread and sweets available, too. The early opening hours are also a welcome plus.

●Ube City, Shintenchō 2-7-20 ●Weekdays  
6AM-2PM, Sat. & Holidays 8AM-4PM ●Closed:  
Sunday & Monday



And you won't want to miss Humming Road, a retro shopping district that gives you a glimpse into the past.



## Near Tokiwa Road

From Ube-Shinkawa Station, continue along Symbol Road and cross the Majime River to Tokiwa Street. Lined with the City Hall, financial institutions, and Nakatsuse Shrine, this street was built in the Edo period. Now being developed as a “walkable city” bustling with pedestrians, visitors will love how spacious and easy to walk around it is.

A slightly more urban atmosphere compared to Symbol Road.



The Monument of the Industrial City, Ube (1956)  
YAMAUCHI Takeo



Build (1979)  
MUKAI Ryokichi



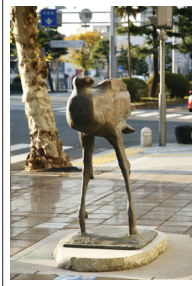
The Sunshine Falling on Alwin Nicolais - [Surprise with the Glare] (1987) TSUCHIDA Takao



King and Queen (1963)  
TOGASHI Hajime



WIG-A (1979)  
KIYOMIZU Kyubei



Wind (1990)  
BANURA Yuji



THE MAN (2011)  
Konstantin SELIKHANOV



The perfect place to relax between walks



Access from JR Ube-Shinkawa Station

- ▶ Train: ~50m from JR Shin-Yamaguchi St. to the Ube Line
- ▶ Airport Bus: ~16m from Yamaguchi Ube Airport to JR Ube-Shinkawa St.
- ▶ Car: ~40m from Ogori IC via Chugoku Expressway,  
~10m from Ube IC via Sanyo Expressway Ube-Shimonoseki Line

Find more information here

For details on the sculptures' locations and to see more not listed in this guidebook,

Check out the “Sculpture Map”!  
<https://ubebiennale.com/stroll/>



There's still more to see on this art trip

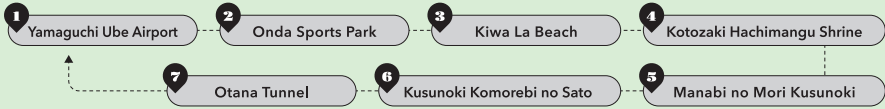
# Road Trip with Amazing Photo Spots



Sculptures can be found all throughout Ube City. Why not enjoy your art trip to the fullest and check out even more sightseeing spots and delicious restaurants while you're here?

## Recommended Road Trip

Approx. 6 Hours Total



The Sky Entrance to  
Yamaguchi Prefecture

### 1 Yamaguchi Ube Airport

• Ube City, Okiube 625



Gravitation (2009)  
OI Hidenori



Cube (1973)  
KAWAGUCHI Tatsuo



Wind Music (1983)  
IWAKI Nobuyoshi

### 2 A Place for Residents to Relax Onda Sports Park

Residents have enjoyed this park for about 60 years, the lush green park also home to 8 sculptures.

• Ube City, Ondacho 4-1-2



The Gate of the Reunion  
(1982)  
HASHIMOTO Akira



The Youth (1960)  
YAMAUCHI Takeo



Dreamer (1991)  
NAKAOKA Shintaro

### 3 Japan's Uyuni Salt Flat?! Kiwa La Beach

• Ube City, Higashikiwa,  
Shikanomae 54-3

Beautiful sunrise and sunset. We recommend the bamboo forest nearby too ♪



Check out the art nearby, too!



Breathing Time  
- Inclination (1993)  
UEMATSU Keiji

### 4 Over 900 omamori charms Kotozaki Hachimangu Shrine

What stands out the most in the shrine is the 900 different varieties of charms and amulets that it offers.

• Ube City, Kamiube 571  
• 0836 (21) 0008

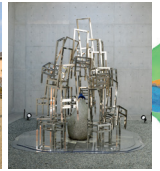


### 5 Dive into the history of Ube City Manabi no Mori Kusunoki

• Ube City, Funaki 361-6  
• 0836 (67) 1277  
• 9AM-7PM (Weekends & Holidays Until 6PM)  
• Closed: Monday, Last day of the Month, End of the Year Holidays



live in the forest  
(2011)  
KITAZAWA Tsutomu



The Forest of Mirrors  
(2009) SANO Kohei

### 6 Where the Bounties of Nature Meet Kusunoki Komorebi no Sato

A spot where you can enjoy the bounty of nature in abundance, including a natural hot spring with free-flowing water, a farmers market where you can buy vegetables picked that day, and a farmhouse restaurant. Stop by for a relaxing break ♪

• Ube City, Nishimagura 1662-1  
• 0836 (67) 2617

Environments Installations -  
The Wind of Ube (1985)  
ISHIGURO Shoji



### 7 Like a scene out of a movie Otana Tunnel



Completed in 1926, the tunnel is made of masonry and brick arches and is said to have been used for the Funaki Railway. It is also famous as a cherry blossom viewing spot in spring.

• Ube City, Higashikibe 4237

Find more information here

For details on the sculptures' locations and to see more not listed in this guidebook,

Check out the "Sculpture Map!"  
<https://ubebiennale.com/stroll/>





Places You'll Want to Stop By

**A** A Café run by a sake brewery  
**Futamata Coffee**

The second floor of the Nagayama Honke Sake Brewery, established in 1888, has been renovated into a café. Visitors can also sample their sake, "Taka".



- Ube City, Kurumaji 138
- 0836-62-0088 (Nagayama Honke Shuzo Sake Brewery)
- 11AM-2:30PM (Wed & Thurs), 11AM-4:30PM (Fri-Sun), Mornings 8:30AM-11AM (Wed-Fri)
- Closed: Mon, Tues

**B** A feast for the mouth and eyes  
**Herb Kitchen Salvus**



Located in a log house-style restaurant surrounded by nature, you can enjoy pizza, pasta, and other dishes made with natural ingredients. And you can't miss the beautiful view overlooking Lake Ono.

- Ube City, Ono 4680-1
- 0836-64-2520
- 11AM-7PM (Last Order 6PM)
- Closed: Tuesdays

**C** Beautiful selection of works by local potters  
**Mugitotto**

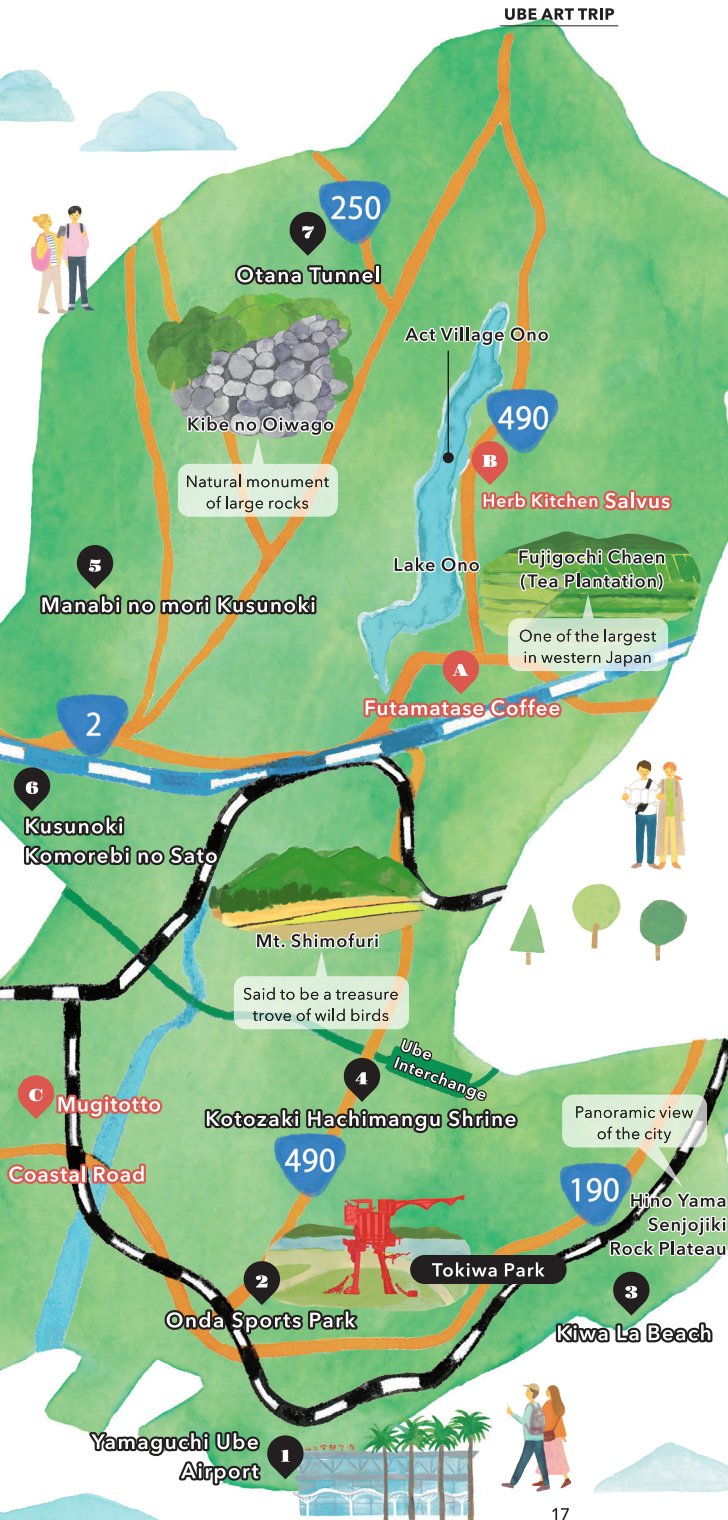
Built on the idea of "daily-use tableware that makes everyday cooking more enjoyable", this shop offers a variety of tableware for everyday life, including local Kaminarigama, Koishiwara Pottery (Fukuoka), Yachimun (Okinawa), and Sodeshigama (Shimane).



- Ube City, Nishihirabara 2-8-11-102
- 090 (8606) 3164 • 11AM-4PM
- Closed: Mon-Wed (Open on Holidays)

**D** A night view with twinkling neon lights  
**Near Ube Coastal Road**

Another spot you won't want to miss is the night view of factories that can be seen from the area around Ube Coastal Road, the only main road connecting central Ube City and Sanyo-Onoda City.



## Traveling from Tokyo, Osaka, Hiroshima, or Fukuoka?

# Ube City Access Guide



Provided by:  
West Japan Railway Company



Closest stations for  
downtown art tours (p.12-15)



## Save these! Ways to get around Ube City

There are multiple ways to get around the city to visit all the different sculptures and hot spots. Make your trip comfortable and easy via bus, rental car, or taxi.

Ube City Bus  
Local Buses



## List of Taxi Companies in Ube City



## List of Rental Car Companies near Yamaguchi Ube Airport



That's not all there is to see in Ube

🔍 「Don't forget to check out “Ube Trip Navigator”!  
<https://ube-kankou.or.jp/>



## Access from Tokyo, Osaka, Hiroshima, & Fukuoka

### from TOKYO



Haneda Airport

→ Yamaguchi Ube Airport 90m

Tokyo Station

→ Shin-Yamaguchi Station → Ube-Shinkawa Station 5.5h

### from OSAKA

Shin-Osaka Station

→ Shin-Yamaguchi Station → Ube-Shinkawa Station 3h

### from HIROSHIMA

Hiroshima Station

→ Shin-Yamaguchi Station → Ube-Shinkawa Station 1.5h

### from FUKUOKA

Hakata Station

→ Asa Station → Ube Station → Ube-Shinkawa Station 1h

### from YAMAGUCHI

Shin-Yamaguchi Station

→ Ube-Shinkawa Station 50m

Shin-Yamaguchi Station

→ Tokiwa Station 40m

Ube-Shinkawa Station

→ Kotoshiba Station 2m

Ube-Shinkawa Station

→ Tokiwa Station 10m

Ube-Shinkawa Station

→ Tokiwa Koen (Tokiwa Park) bus stop 15m

Shin-Yamaguchi Station

→ Tokiwa Koen (Tokiwa Park) bus stop 30m



### ✓ Check the train schedule when using the JR Ube Line!

The JR Ube Line that runs through Ube City only runs once or twice per hour, so it may take some time to get around. Check the timetable in advance and plan your trip accordingly ♪

<https://www.jr-odekake.net/>



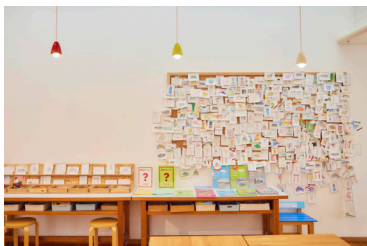
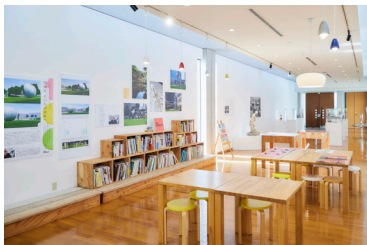




# SPOTLIGHT!

Stop by on your UBE Biennale trip! Tokiwa Park Onsite Facilities

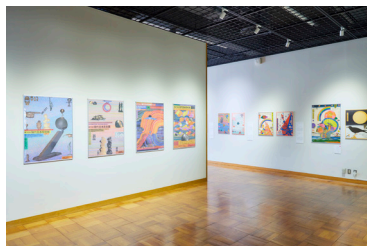
## UBE Biennale Library



A visitor center for outdoor sculptures. Equipped with sculpture maps, books, and a coloring corner for both children and adults.

●Ube City, Nonaka 3-4-29 Tokiwa Museum (Tokiwa Park) ●9AM-5PM ●Closed: Tuesday, New Year Holidays (12/29-1/1) \*When Tues. falls on a holiday, open day of and closed the following day

## Tokiwakosui Hall Art Gallery



Holds special exhibitions and workshops about the collection on display. A must-see when checking out the Ube Biennale.

●Ube City, Okiube 254 Tokiwakosui Hall (Tokiwa Park) ●10AM-4PM ●Closed: Tuesday, New Year Holidays (12/29-1/1), During Exhibition Updates \*When Tues. falls on a holiday, open day of and closed the following day



## FREE GIFT

Bring this guidebook to the Main Venue (UBE Biennale Sculpture Hill) anytime during the 30th UBE Biennale exhibit to receive a special gift for free!



### UBE Biennale 2024 Guidebook

Issued March 29th, 2024

- Produced by: UBE Biennale Secretariat  
(Ube City Tourism, Sports & Culture Department, Cultural Promotion Division, UBE Biennale Committee)
- Questions: ☎0836(34)8562 9AM-5PM(Closed Weekends & Holidays)
- E-mail: [museum@city.ube.yamaguchi.jp](mailto:museum@city.ube.yamaguchi.jp)

※Information accurate as of March 2024. May be subject to change.  
※Unauthorized publication of articles, photographs, and illustrations in this guidebook are strictly prohibited.

More information on our Instagram!

